

**WIFI
Networks -
SLCConnect
& SLCPublic**



**St. Lawrence
College**

This manual contains pertinent information about SLC's WIFI Networks – SLCConnect & SLCPublic.

June 2017

WIFI – SLCCConnect & SLCPublic

About

Wireless Internet access is available for personal devices everywhere on campus. At SLC, we have two WIFI networks on campus. The SLCCConnect network is a secure network that you can access with the same credentials that you use to login to slc.me, the college computers, blackboard, etc. The SLCPublic network is available to everyone on campus and requires no password to login.

How to Connect

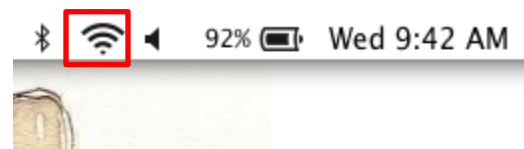
Personal Computer/Laptop

To connect your personal computer/laptop you must **select a wireless network** that your device can connect to. Click on the **connection/Wi-Fi icon** to view available network options.

Windows

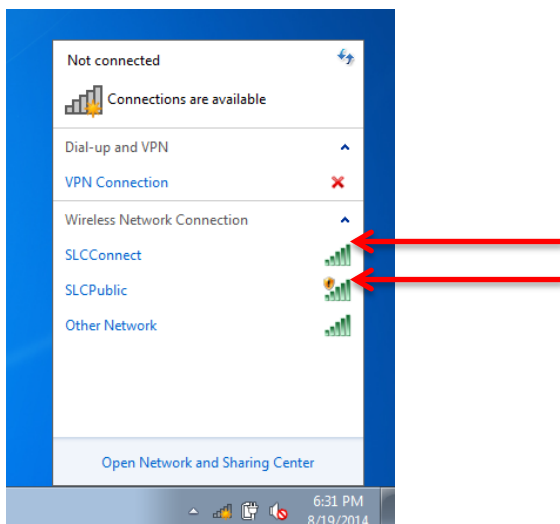


Mac

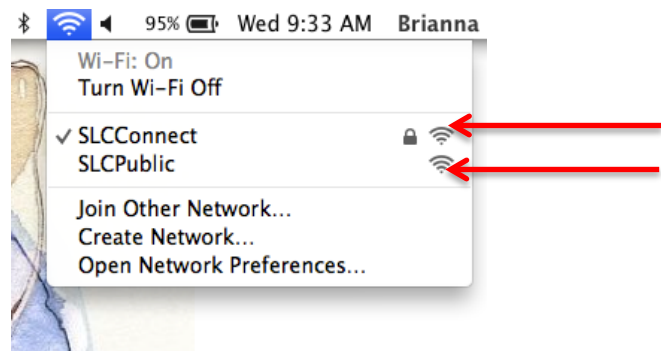


A list of available networks will pop up. **Choose the network** you would like to connect to and follow the next steps to properly connect to the *SLCCConnect* or *SLCPublic* network.

Windows



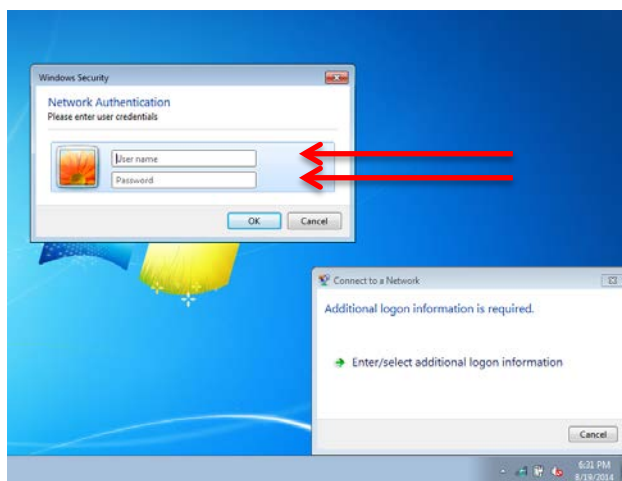
Mac



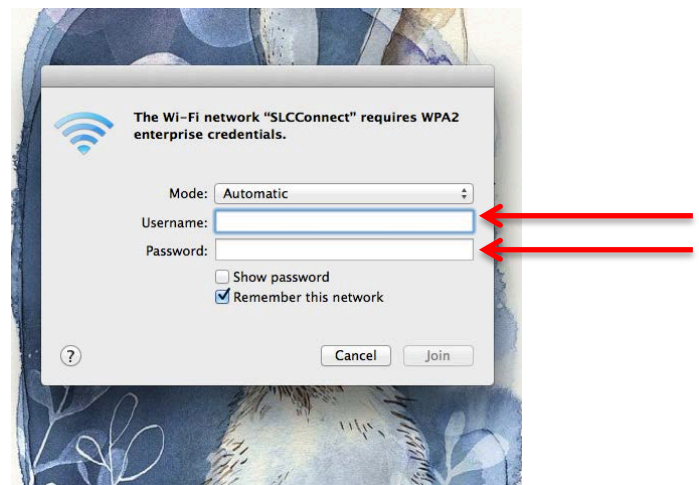
WIFI – SLCCConnect & SLCPublic

Connect to SLCCConnect: *SLCCConnect* is the college's secure network that requires an SLC account to sign in. If you select this network, you will be presented with the screen below and asked to enter a **username** and **password**. You will use the same username and password to sign in that you use to sign in to slc.me, college computers, blackboard, etc. Click **Ok** or **Join** to connect.

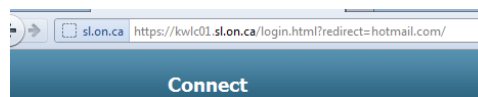
Windows



Mac



Connect to SLCPublic: *SLCPublic* is the college's open network that anyone on the college campus can connect to. It does not require a username or password to log in and allows all students and visitors of the college to have an available network to connect to without an account. To connect to *SLCPublic* you will need to **accept the web agreement** that opens in your web browser after you select the network.



Welcome to St. Lawrence College Wireless Network

St. Lawrence College provides Internet access points at no charge in selected areas for guests with portable computers or devices capable of receiving wireless signals. You will be able to access the Internet from your wireless device when sitting within range of an access point. Guests are expected to use the wireless access in a legal and responsible manner. By using this wireless access network, the user acknowledges that he/she is subject to, and agrees to abide by all laws, and all provincial and federal rules and regulations applicable to Internet use. Students and Staff are encouraged to use the "SLCCConnect" wireless network when connecting. —Disclaimer— St. Lawrence College is providing wireless connectivity in this facility as a guest service and offers no guarantees that any use of the wireless connection is in any way secure, or that any privacy can be protected when using this wireless connection. Use of this wireless connection is entirely at the risk of the user, and St. Lawrence College is not responsible for any loss of any information that may arise from the use of the wireless connection, or for any loss, injury, or damages resulting from the use of the wireless connection.

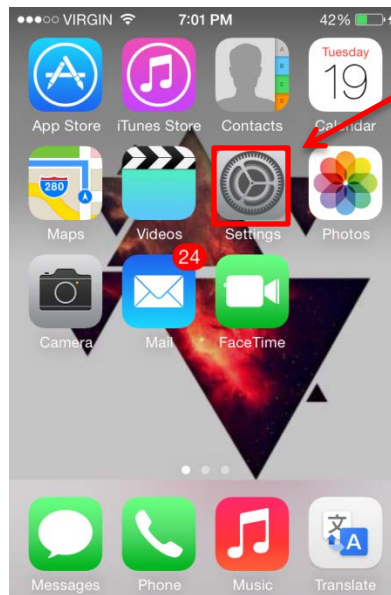
Accept

WIFI – SLCCConnect & SLCPublic

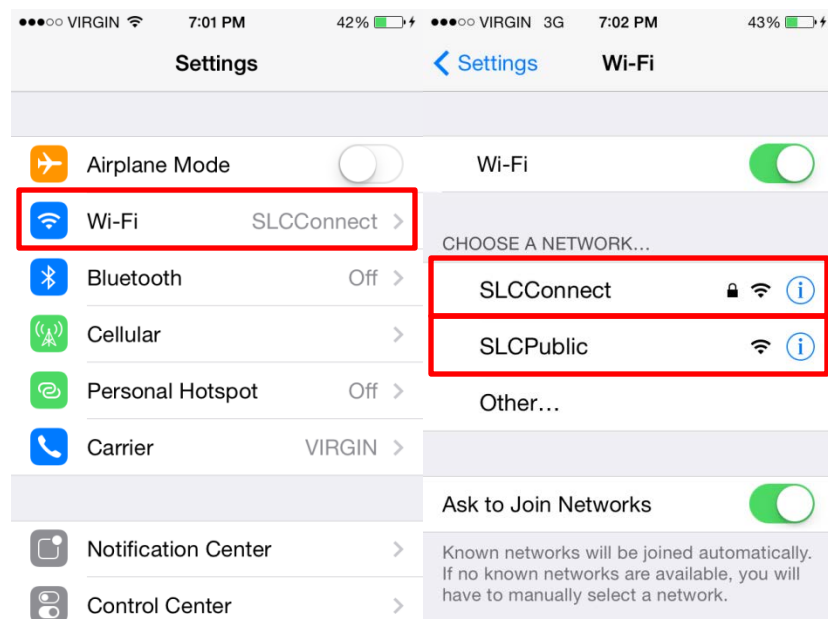
Phone/Tablet

To connect your phone or tablet to *SLCCConnect* or *SLCPublic*, please follow the steps below:

Choose **Settings**.



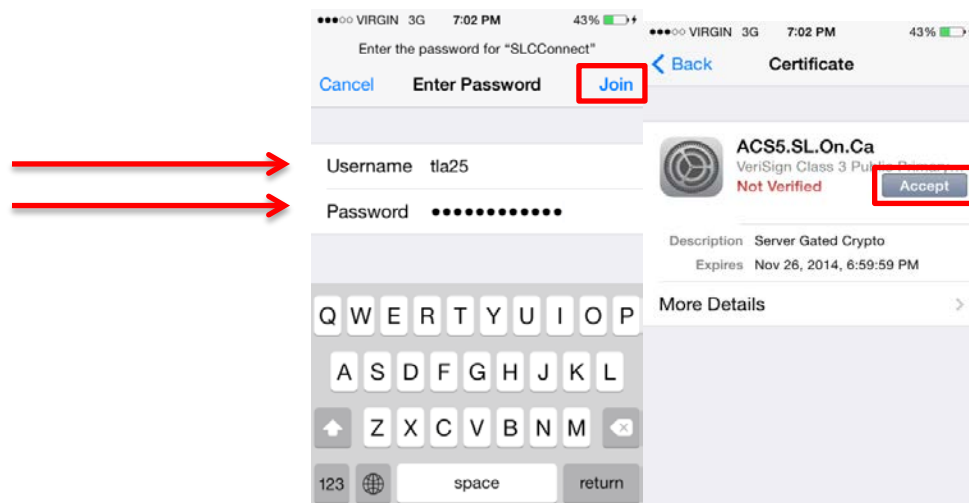
From your **Settings**, select **Wi-Fi** and then select the college network you want to connect to (**SLCCConnect** or **SLCPublic**).



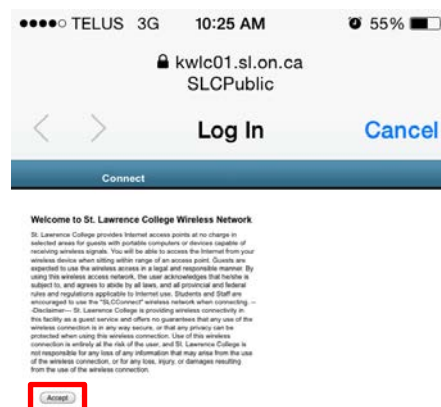
WIFI – SLCCConnect & SLCPublic

If you select **SLCCConnect** (*SLC's Secure Network*) you will be required to sign into the network with your SLC login credentials. Enter a **Username or Identity** and **password**. You will use the same username and password to sign in that you use to sign in to slc.me, college computers, blackboard, etc. Click **Join** to connect.

If using an iPhone you will then have to **agree to a certificate agreement** with SLC by clicking **Accept**.



If you select **SLCPublic** (*SLC's Open Network*) follow the same steps up until the login screen. You will not be required to enter a username or password but you will have to **Agree** to the **mobile web agreement** in your internet browser.



If you have any issues connecting to either of the SLC WIFI networks, please seek the IT Service Desk for assistance at slc.me@sl.on.ca or x1000